

Schneider Wiser App

User Guide

Outline

Schneider Wiser App

New device installation and settings	P.3
User interface	P.5
Change the Wiser Home Controller password	P.7
Troubleshooting	P.9

Schneider Wiser app – new device installation and settings

iOS

Step 1

If you are using an iOS device, please download and install the “Wiser1 HD” from the App Store.

(below is an example of iOS7.0. Different iOS versions may have different interfaces)



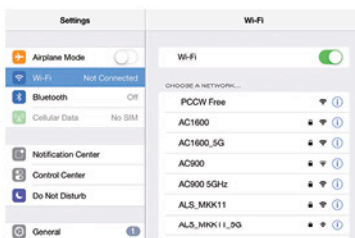
iPhone



iPad

Step 2

After downloading and installation, please connect your smartphone/tablet to the same Wi-Fi source used by the Wiser system.



Step 3

Enter your DDNS address in “Wiser WAN IP/URL”, your Wiser IP address in “Wiser LAN IP”, and your password in “Password”, then press “Connect”.



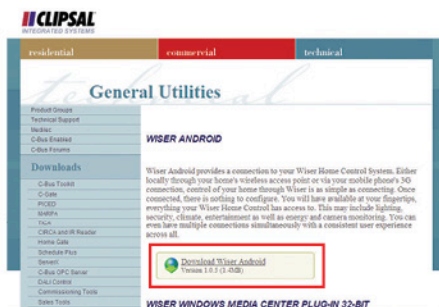
Android

Step 1


If you are using an Android device, please download and install the “Wiser Android” from http://www2.clipsal.com/cis/technical/downloads/general_utilities#WiserAndroid (below is an example of Android4.3. Different Android versions may have different interfaces)

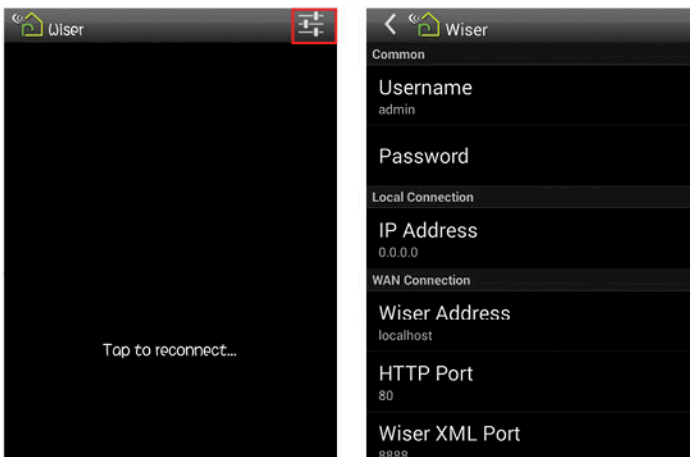
Step 2

Select “Wiser Android” to download.




Step 3

After opening apps, press “”, enter your username, password, IP address and Wiser address. Upon filling the information, back to previous page and press “Reconnect”.



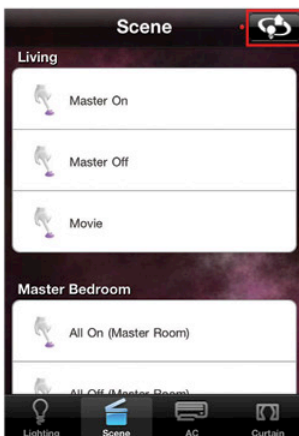
Schneider Wiser app – user interface

(below is an example of Schneider Wiser Gateway 1.5. Different versions may have different interfaces)

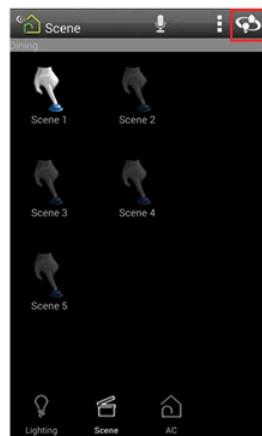
Press  to change the scene-setting interface, such as by zone, scene, lighting and air con.



iPad interface



iPhone interface

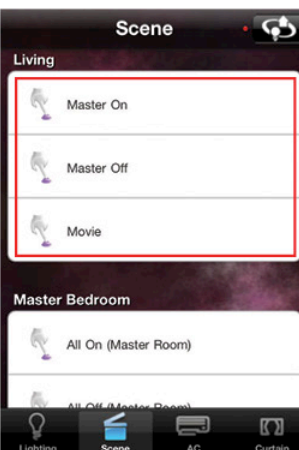


Android interface

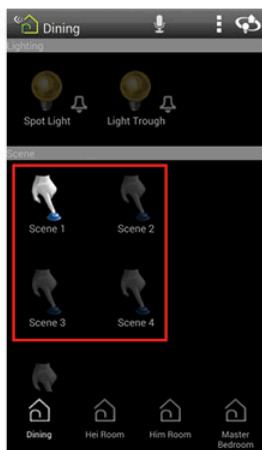
Select pre-programmed scenes for different rooms.



iPad interface



iPhone interface

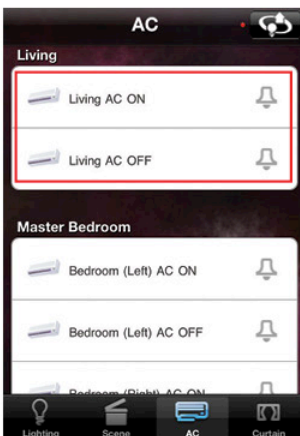


Android interface

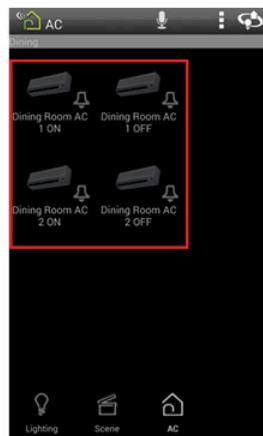
Air-Con: Turn air-conditioning on/off.



iPad interface



iPhone interface

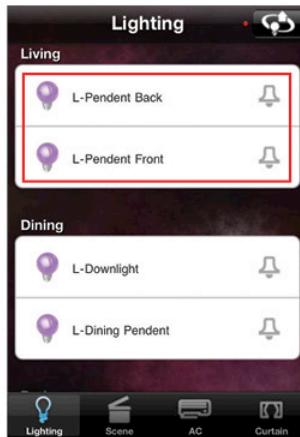


Android interface

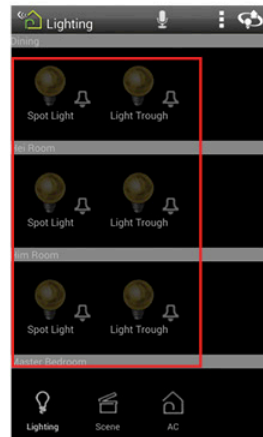
Lighting: Turn light on/off.



iPad interface



iPhone interface



Android interface

Change the Wiser Home Controller password

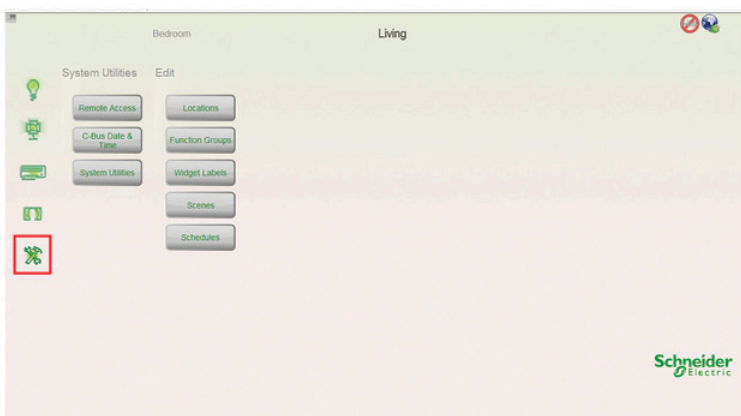
Step 1

Enter the Wiser IP address in a browser to access the administration page.



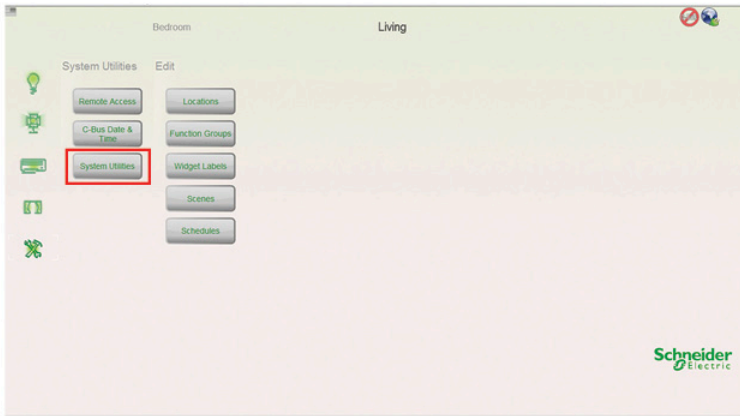
Step 2

Select  .



Step 3

Select  .



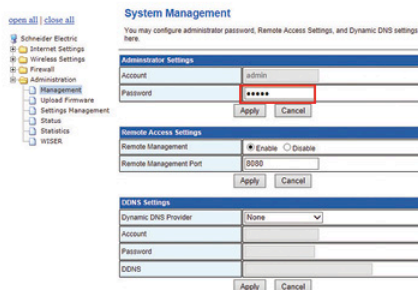
Step 4

Select “Administration”, then select “Management”.



Step 5

Enter new customized password in “Administrator Settings”, then press “Apply” to change password.*



* If you have installed Schneider Wiser in your smartphone/tablet, please also update the password to avoid connection failure.

Troubleshooting

1. If you cannot use the app to control the Smart Living system, please check the following items:
 - (1) Make sure your device is connected to the network
In-home control: Wiser device, smartphones or tablets are connected to Wi-Fi network
Out-home control: Smartphones or tablets are connected to 3G/4G/Wi-Fi network
 - (2) Make sure the device is connected to a power supply
Schneider: Wiser device/related equipments are connected to the power supply
Control 4: Home Controller/related equipments are connected to the power supply
 - (3) Make sure the infra-red sensor is placed in the device's infra-red receiver
 - (4) Make sure the login name and password for Schneider and Control 4 are correct
2. If you would like to use a new device to control the Smart Living system, please call our hotline 1000 for details