

IP camera

User Guide

Outline

IP camera

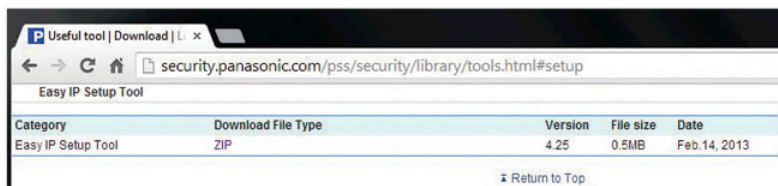
Installation and intranet settings P.3

Change IP camera password P.10

IP camera – installation and intranet settings

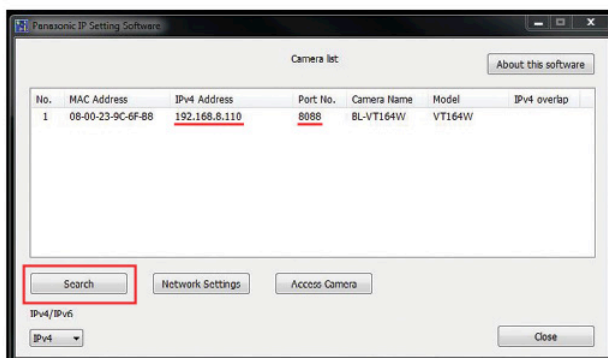
Step 1

Find the IP camera's IP address. Use Panasonic disc to install the Panasonic IP Setting Software's "Easy IP Setup Tool" or download and install from <http://security.panasonic.com/pss/security/library/tools.html#setup>



Step 2

Please make sure computer, router and IP camera connect to the same Wi-Fi network. Open "Easy IP Setup Tool", and press "Search" to find the IP address.

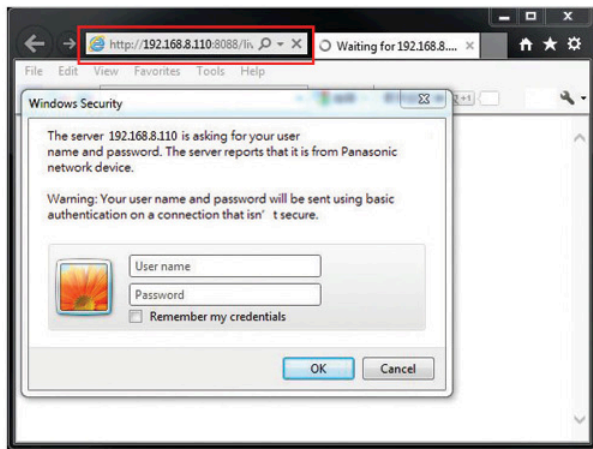


Step 3

Open Internet Explorer (below is an example of Internet Explorer 8.0. Chrome, Firefox, Netscape and Safari are not supported), and enter the IP camera link, format as below:

- e.g. http://192.168.8.110:8080 (refer to the underlined part in step 2)

IP camera's IP address Port no.



Step 4

Enter default user name and password login to the IP camera

- Default user name: admin

- Default password: 12345

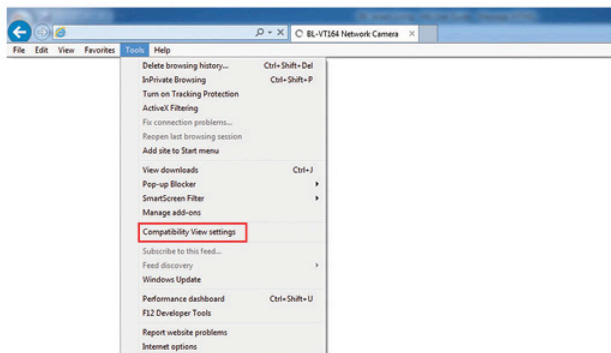
Press "OK", then press "OK" to view IP camera's live image (Step 9).



If the website can't display live image as normal, please follow step 5-8 to do the settings.

Step 5

Open Internet Explorer, select “Tools”, then select “Compatibility View settings”.

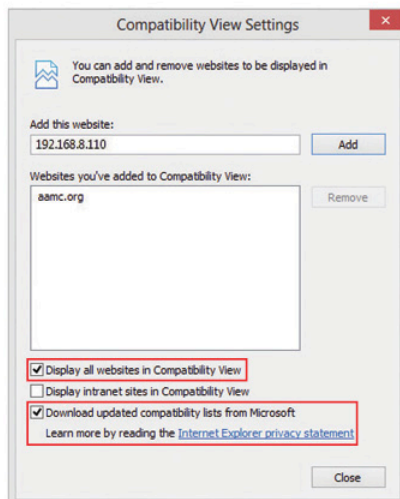


Step 6

Add the IP camera's website in “Compatibility View Settings”.

Step 7

Make sure “Display all websites in Compatibility View” and “Download updated compatibility lists from Microsoft” are selected.

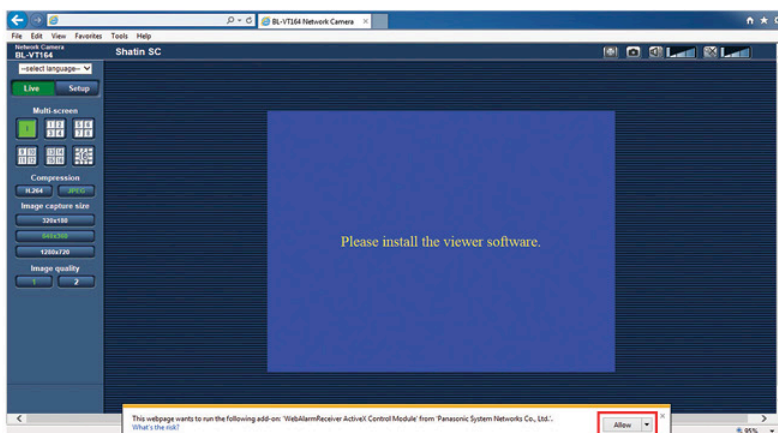


Step 8

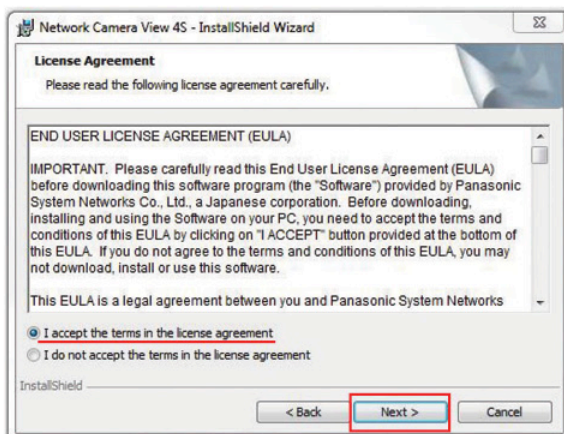
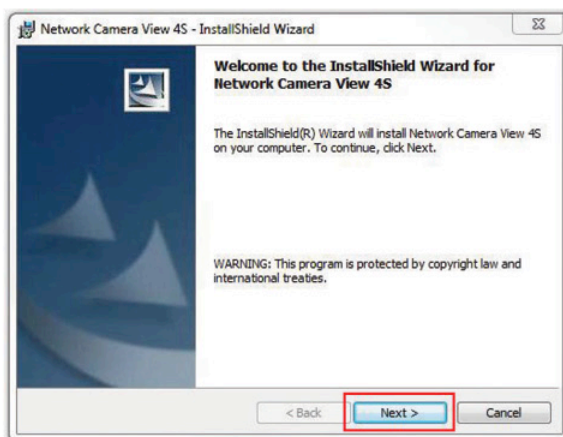
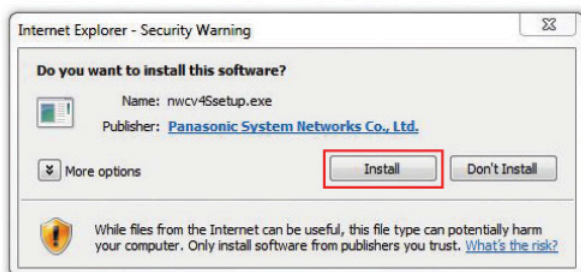
If you haven't used a Panasonic IP camera before, press "OK" to install "viewer software".

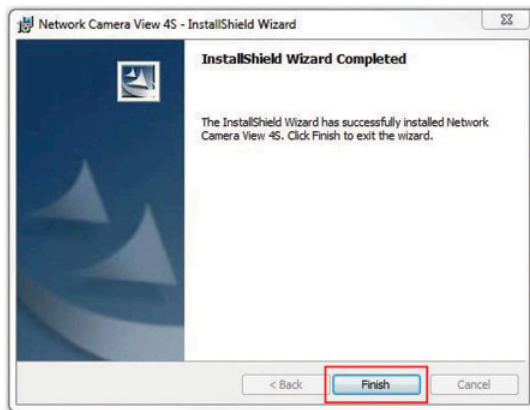
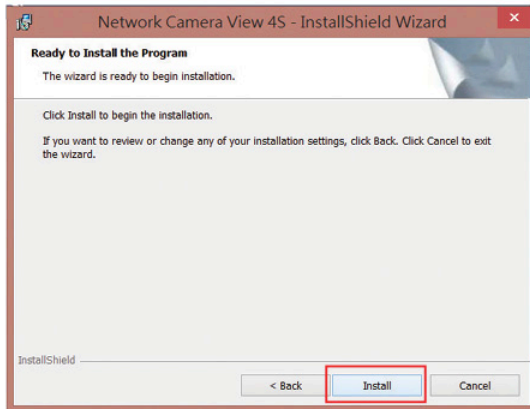


Press "Allow".



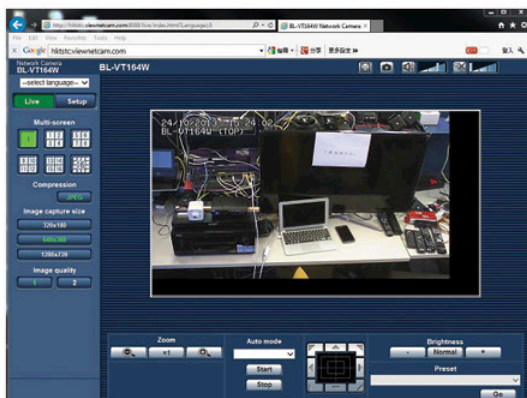
Press "Install" ► "Next" ► "I accept the terms in the license agreement" ►
"Next" ► "Install" ► " Finish"





Step 9

After installation, you can view the live image via Internet Explorer.



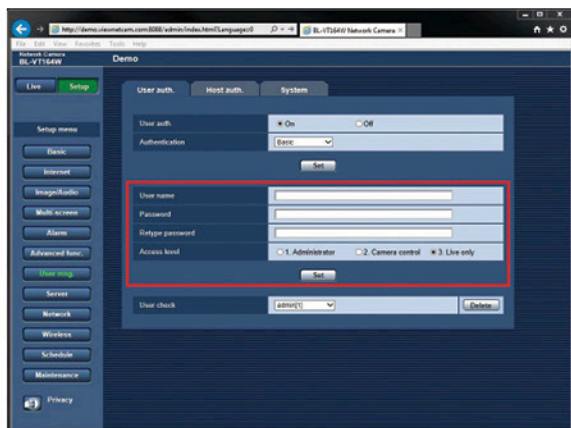
Change the IP camera password

Step 1

Go to the IP camera website, select "Setup" ► "User mng", then select "User auth".

Step 2

Change the user name and password, then press "Set" to finish.*



Step 3

If you have installed "Viewnetcam" in your smartphone/tablet, please also update the password to avoid connection failure.

* After changing password, the monitoring system of Control4 MyHome app might be affected.