

# **Google Wifi**

## **How to download the Google Wifi app?**

---

---

## How to download the Google Wifi app

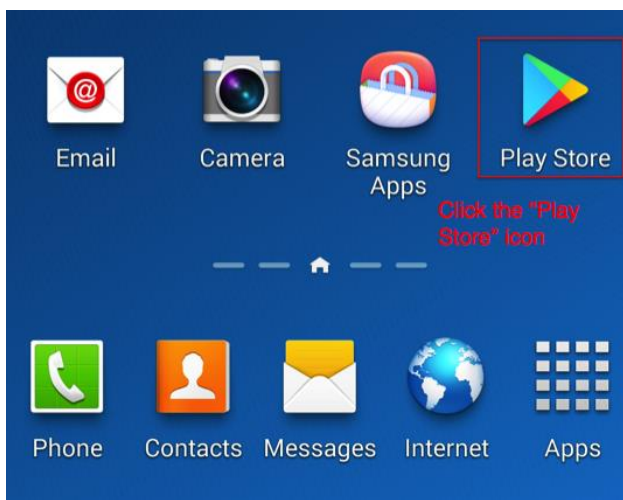
The Google Wifi companion app is needed to set up your Wifi point(s) and access its features. It is compatible with devices running **Android 4 and up** or **iOS 8 and up**.

Download the app at the [Google Play Store](#)  or the [Apple App Store](#) .

**Note:** If you're searching the Apple App Store on an iPad, make sure "iPhone Only" is selected in the upper-left corner.

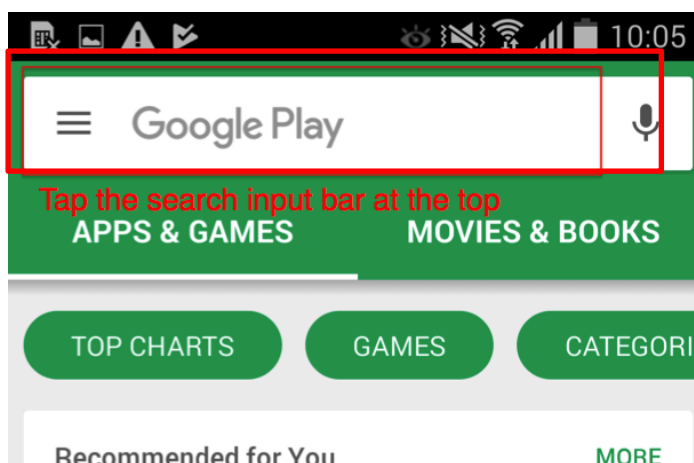
### 1.1. Android

- Click to launch "Play store". (Photo 1)



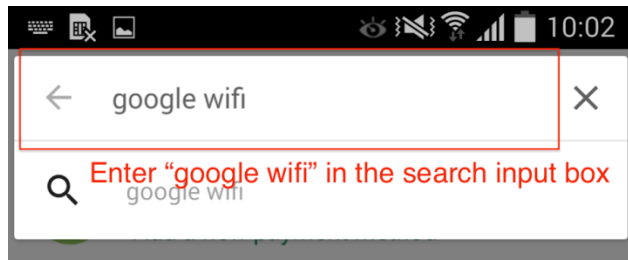
(Photo 1)

- Tap the search bar at the top (Photo 2)



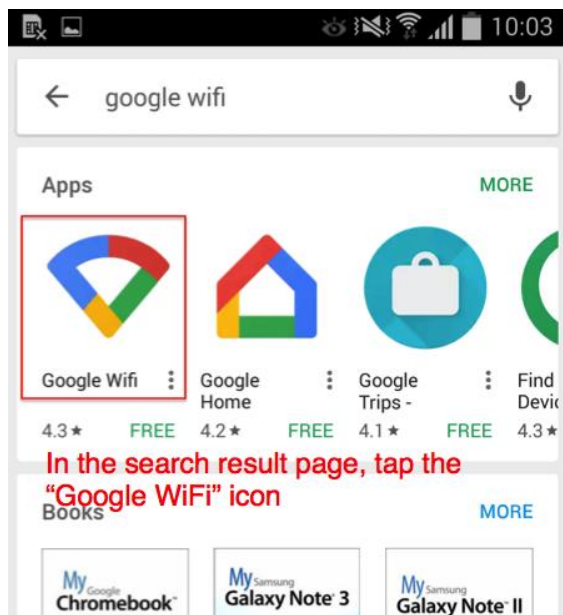
(Photo 2)

- In the search page, enter “google wifi” in the search box at the top. (Photo 3)



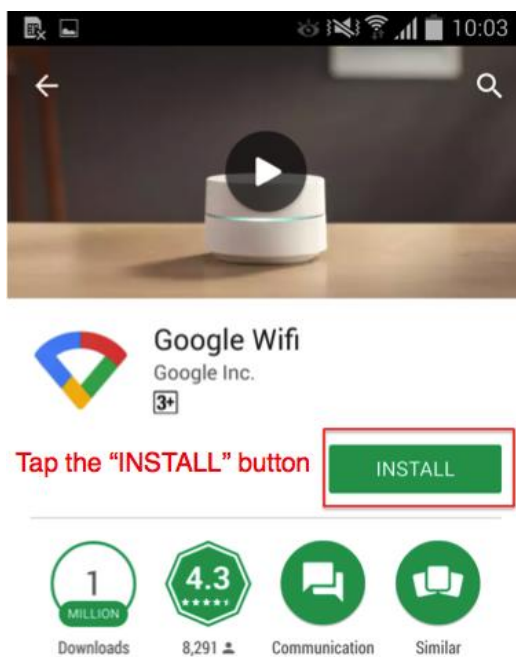
(Photo 3)

- In the search result, tap the “Google Wifi” app icon. (Photo 4)



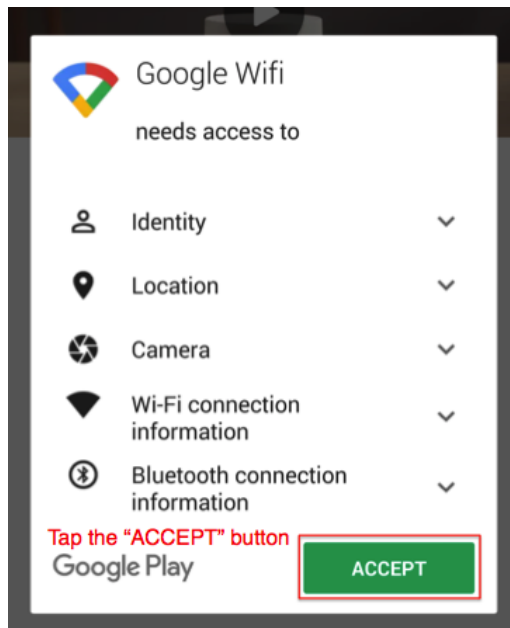
(Photo 4)

- In the App summary page, tap the “INSTALL” button (Photo 5)



(Photo 5)

- In the pop-up menu, tap “ACCEPT” (Photo 6)



(Photo 6)

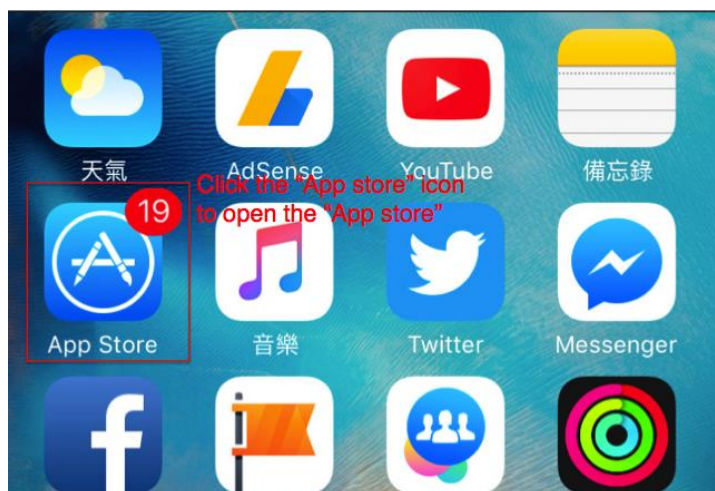
- If installation is successful, the app icon below will appear on your phone. (Photo 7)



(Photo 7)

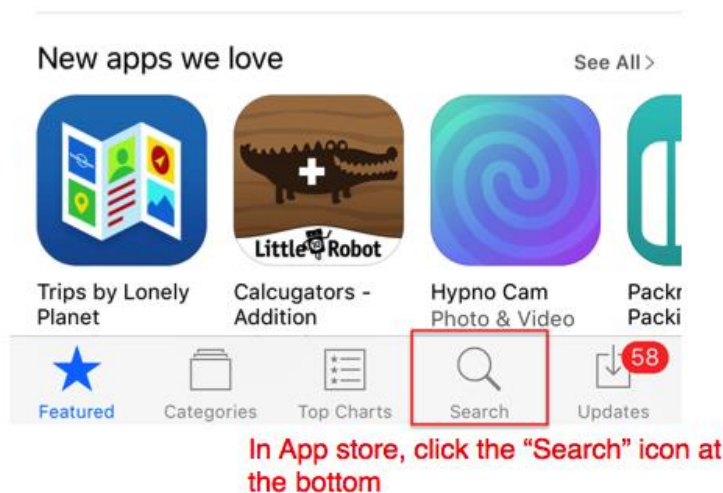
## 1.2. iOS

- Find and launch “App store” (Photo 8)



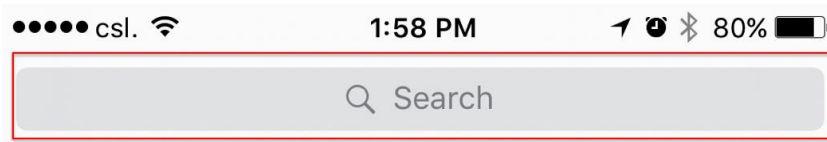
(Photo 8)

- Click the “Search” icon at the bottom. (Photo 9)



(Photo 9)

- In the search page, enter “google wifi” in the search box at the top (Photo 10)

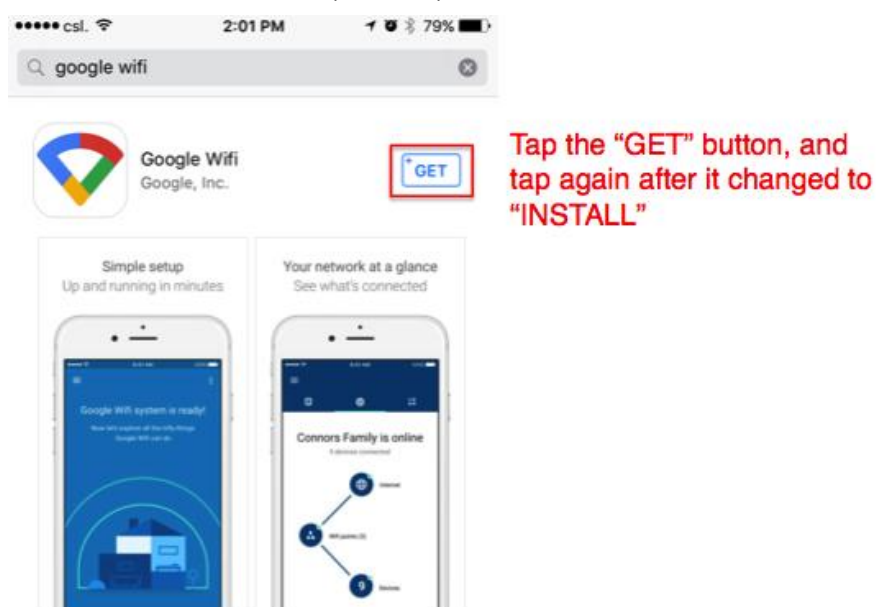


Enter “google wifi” in the search input at the top

(Photo 10)

- In the search result page, install the “**Google Wifi**” App by tapping the “**GET**” button, and tap again after the button is changed to “**INSTALL**”

**Note:** You may be required to enter your Apple account password/TOUCH ID before the installation. (Photo 11)



(Photo 11)

- If installation is successful, the below app icon will appear on your iPhone. (Photos 12)



(Photos 12)